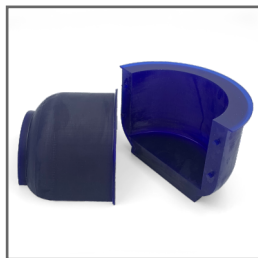




## STANDARD PHOTOPOLYMER RESIN



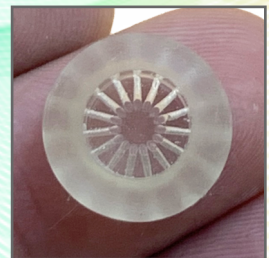
DENTAL MODELS



D.I.Y.



PROTOTYPING



ENGG. COMPONENTS

JYOCURE™ photopolymer resin is a type of polymer that changes its physical properties when introduced to light such as a lamp, a projector or light-emitting diodes (LEDs). It's a perfect companion for all LCD/ DLP / SLA 3D printers for hobbyists as well as professionals. Jyocure exhibits excellent print quality in terms of details and performance combined with amazing features such as low-odour and low-shrinkage printing.

## TECHNICAL PROPERTIES

RESIN PARAMETERS	DATA
WAVELENGTH	405 nm
VISCOSITY (25° C)	170 mPas
SHRINKAGE	0.2 - 0.7 %
TENSILE STRENGTH	20 Mpa
BOTTOM EXPOSURE	50 - 200 s
NORMAL EXPOSURE	4 - 6 s
LIGHT OFF DELAY	3 - 4 s
CURING TEMP	25 - 30 °C
SUPPORT TYPE	Medium / Heavy
SUPPORT DENSITY	> 70 %

## AVAILABLE COLORS\*













\*Special color are available on request.

## PRECAUTIONS

- Shake the bottle before use & avoid using resin under direct sunlight.
- Wear gloves and mask when handling resin.
- Do not drink the resin & avoid skin contact. If skin comes in contact with resin, please wash with water immediately and see a doctor if any allergy happens.
- Keep them away from children & keep good indoor ventilation.
- Wash 3D printed models with IPA / min 95% Ethanol for minimum 30 seconds.

\*Shelf life 1 year from date of manufacture

## ADVANTAGES

 <b>LOW ODOUR</b> Enjoy Odour free printing with Jyocure resin.	 <b>LOW SHRINKAGE</b> Worry-free printing with Low Shrinkage.	 <b>QUICK CURING</b> Quick prototyping, Bottom Exposure : 60S, Normal Exposure : 4-5S	 <b>LESS BRITTLE HIGHER TENACITY</b>	 <b>HIGH QUALITY PRINT</b>
 <b>LOW VISCOSITY</b> Jyocure is very fluid & can be used to produce high precision parts.	 <b>LEAKPROOF PACKAGING</b> Packaged in sealed HDPE bottle	 <b>CONSISTENT QUALITY</b>	 <b>RAPID PROTOTYPING</b> Produce fast prototypes of components, jewellery, dental models, toys etc.	 <b>TECHNICAL SUPPORT</b> Contact us for immediate Technical support and queries.

Disclaimer: The information given is based on the results obtained from our R & D Laboratory. However, since the conditions of applications is beyond our control, we cannot stand warranty regarding the result obtained by the use of the product. Liability of Jyoti Ceramic Industries ceases for any damage, injury etc. caused by the mishandling of the products.

Contact us :

**JYOTI CERAMIC INDUSTRIES PVT. LTD.**



Proudly made in INDIA  
for the WORLD



### India (Head Office)

C-21, N.I.C.E, Satpur, Nashik - 422 007, Maharashtra, India.  
 Tel.: +91 (0) 253 6918111, 2350120 / 338 / 729  
 E-mail: info@jyoticeramic.com  
 Web: www.jyoticeramic.com

### Europe

Jyoti Ceramic GmbH  
 Frankenstr. 12, 90762 Fürth, Germany.  
 Tel.: +49 (0) 911 78 71 20 83 / 84 / 85  
 Fax : +49 (0) 911 78 71 20 82  
 E-mail : sales@jyoticeramic.com

### U.S.A.

Techno Ceramic Inc.,  
 P.O. Box 333, New Hampton, NY 10958, USA.  
 Tel.: +1 (0) 845 547 2219 / 845 547 2220  
 Fax: +1 (0) 845 547 2221  
 Email : jcw@tci-jyoti.com



54 years service  
to the nation

[www.jyoticeramic.com](http://www.jyoticeramic.com)